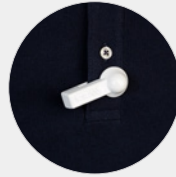


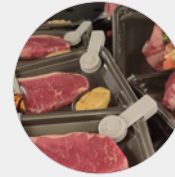
User Guide

SlideTag™

IDEAL APPLICATIONS:



Apparel



Steak and Meat



Accessories

Applying the SlideTag™



- 1** Slide the opening onto the area of merchandise to be tagged ensuring the clutch is on the outside.



- 2** Press firmly on the plunger. The item is now securely tagged!



Releasing the SlideTag™

- 1** Apply the clutch to the detacher. If the plunger does not release immediately, press the top firmly and it will be released.



- 2** Remove the released SlideTag™.

